

Hartland Ave between West Saanich Rd and Hartland Landfill

March 10, 2019 To March 14, 2019



The data presented here is for information purposes only and should not be considered authoritative for construction, geotechnical, engineering, navigational, legal, or other site-specific uses. The information shared is owned by the Transportation Division of the Engineering Department at the District of Saanich. Accuracy is not guaranteed.

Start Date: 11-Mar-19
 Start Time: 0:01
 Station ID: M0021-01

Location 1: Hartland Ave between West Saanich Rd and Hartland Landfill

Note: West Saanich Rd and Hartland Landfill

DATE:	March 11, 2019		March 12, 2019		March 13, 2019		March 14, 2019		March 15, 2019		WK AVG		WK AVG	HOURLY
	MON		TUE		WED		THURS		FRI		WK AVG		CH 1+2	%
Time:	EB	WB	EB	WB	EB	WB	EB	WB	EB	WB	EB	WB		
12-1 AM					2	1	0	1	4	1	2	1	3	0.2%
1-2 AM					1	1	0	0	1	1	1	1	1	0.1%
2-3 AM					0	0	0	0	0	0	0	0	0	0.0%
3-4 AM					0	0	0	0	0	0	0	0	0	0.0%
4-5 AM					0	0	3	1	2	1	2	1	2	0.2%
5-6 AM					4	4	5	4	5	4	5	4	9	0.6%
6-7 AM					14	23	14	22	12	21	13	22	35	2.5%
7-8 AM					36	25	33	18	42	15	37	19	56	4.0%
8-9 AM					34	39	38	41	33	48	35	43	78	5.5%
9-10 AM					44	59	43	53	65	56	51	56	107	7.5%
10-11 AM					64	56	81	70	55	70	67	65	132	9.3%
11-12 PM					69	64	63	67	67	59	66	63	130	9.2%
12-1 PM					68	57	80	70	59	69	69	65	134	9.5%
1-2 PM					78	74	73	78	69	65	73	72	146	10.3%
2-3 PM					78	70	70	69	76	62	75	67	142	10.0%
3-4 PM					62	53	68	68	63	72	64	64	129	9.1%
4-5 PM					34	56	46	53	42	57	41	55	96	6.8%
5-6 PM					37	35	42	55	43	42	41	44	85	6.0%
6-7 PM					20	21	23	30	38	13	27	21	48	3.4%
7-8 PM					4	9	29	10	26	20	20	13	33	2.3%
8-9 PM					7	11	18	16	8	10	11	12	23	1.7%
9-10 PM					7	5	4	10	1	10	4	8	12	0.9%
10-11 PM					1	4	5	4	0	6	2	5	7	0.5%
11-12 AM					1	3	2	5	2	5	2	4	6	0.4%
LANES					665	670	740	745	713	707	706	707	1413	100.0%
TOTAL					1335		1485		1420		1420			
	MON		TUE		WED		THURS		FRI		WK AVG			

PEAK HOUR					TOTAL VEHICALS-PEAK PERIODS		2 HOUR PEAK INTERVALS			
MAX. 7 - 9 am PEAK HOUR	78	⇒	5.5%	between 8-9 AM	579	⇒ 6 HR TOTAL	2 HR AM (7 - 9 AM)			
MAX. 7 - 11 am PEAK HOUR	132	⇒	9.3%	between 10-11 AM	315	⇒ 4 HR TOTAL	VEH / HR	VEH / 2HR	2 HR %	
MAX. 11 am - 1 pm PEAK HOUR	134	⇒	9.5%	between 12-1 PM			7-8 AM	56	134	9.5%
MAX. 11 am - 3 pm PEAK HOUR	146	⇒	10.3%	between 1-2 PM			8-9 AM	78		
MAX. 4 - 6 pm PEAK HOUR	96	⇒	6.8%	between 4-5 PM			2 HR NOON (11 - 1 PM)			
MAX. 3 - 6 pm PEAK HOUR	129	⇒	9.1%	between 3-4 PM			VEH / HR	VEH / 2HR	2 HR %	
							11-12 PM	130	264	18.7%
							12-1 PM	134		
							2 HR PM (4 - 6 PM)			
							VEH / HR	VEH / 2HR	2 HR %	
							4-5 PM	96	181	12.8%
							5-6 PM	85		

Hartland Ave between West Saanich Rd and Hartland Landfill

Westbound

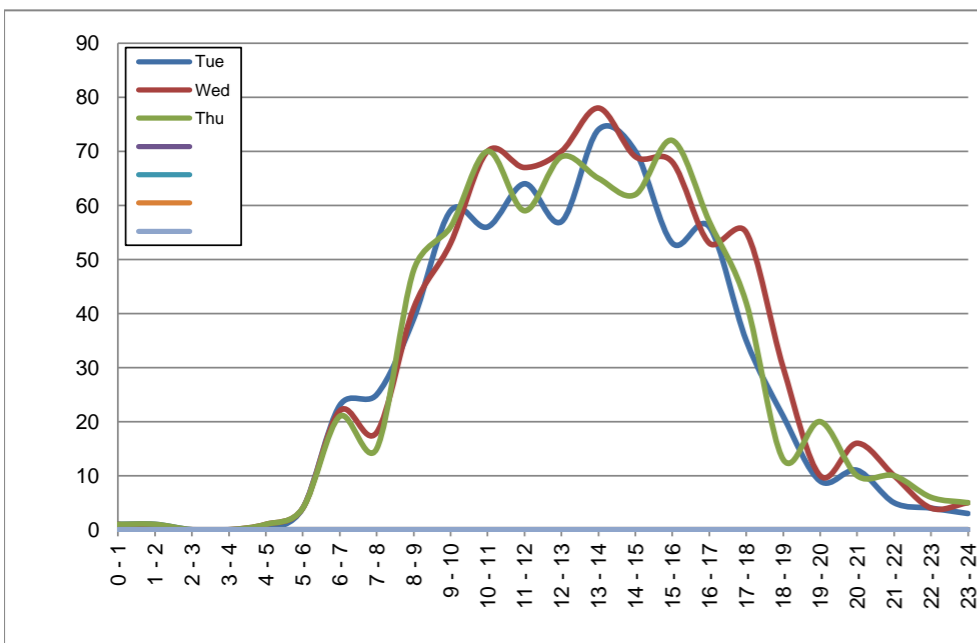
March 12, 2019 to March 14, 2019

Hourly Volumes

Time Period	Tue	Wed	Thu				
	Mar 12	Mar 13	Mar 14				
0 - 1	1	1	1				
1 - 2	1	0	1				
2 - 3	0	0	0				
3 - 4	0	0	0				
4 - 5	0	1	1				
5 - 6	4	4	4				
6 - 7	23	22	21				
7 - 8	25	18	15				
8 - 9	39	41	48				
9 - 10	59	53	56				
10 - 11	56	70	70				
11 - 12	64	67	59				
12 - 13	57	70	69				
13 - 14	74	78	65				
14 - 15	70	69	62				
15 - 16	53	68	72				
16 - 17	56	53	57				
17 - 18	35	55	42				
18 - 19	21	30	13				
19 - 20	9	10	20				
20 - 21	11	16	10				
21 - 22	5	10	10				
22 - 23	4	4	6				
23 - 24	3	5	5				
Day Total	670	745	707				

15-Minute Volumes

Time Start	Tue	Wed	Thu				
	Mar 12	Mar 13	Mar 14				
0:00	1	0	0				
0:15	0	1	1				
0:30	0	0	0				
0:45	0	0	0				
1:00	0	0	1				
1:15	0	0	0				
1:30	0	0	0				
1:45	1	0	0				
2:00	0	0	0				
2:15	0	0	0				
2:30	0	0	0				
2:45	0	0	0				
3:00	0	0	0				
3:15	0	0	0				
3:30	0	0	0				
3:45	0	0	0				
4:00	0	0	0				
4:15	0	0	0				
4:30	0	1	0				
4:45	0	0	1				
5:00	0	0	0				
5:15	0	2	0				
5:30	2	0	2				
5:45	2	2	2				
6:00	6	5	4				
6:15	3	4	3				
6:30	6	4	5				
6:45	8	9	9				
7:00	6	3	4				
7:15	3	2	2				
7:30	10	7	4				
7:45	6	6	5				
8:00	5	7	8				
8:15	5	11	6				
8:30	19	11	13				
8:45	10	12	21				
9:00	8	10	18				
9:15	23	10	9				
9:30	13	11	20				
9:45	15	22	9				
10:00	14	21	13				
10:15	16	20	18				
10:30	11	16	22				
10:45	15	13	17				
11:00	15	14	13				
11:15	16	16	16				
11:30	16	21	12				
11:45	17	16	18				
12:00	16	14	18				
12:15	12	22	11				
12:30	14	17	19				
12:45	15	17	21				
13:00	24	15	14				
13:15	19	20	14				
13:30	18	25	19				
13:45	13	18	18				
14:00	21	23	10				
14:15	22	16	23				
14:30	20	15	15				
14:45	7	15	14				
15:00	15	12	17				
15:15	9	15	17				
15:30	15	22	20				
15:45	14	19	18				
16:00	15	13	13				
16:15	17	14	12				
16:30	11	12	12				
16:45	13	14	20				
17:00	12	12	13				
17:15	9	17	13				
17:30	11	11	5				
17:45	3	15	11				
18:00	6	8	3				
18:15	7	6	6				
18:30	6	9	1				
18:45	2	7	3				
19:00	2	5	8				
19:15	2	0	6				
19:30	3	3	3				
19:45	2	2	3				
20:00	2	4	2				
20:15	3	5	1				
20:30	4	1	2				
20:45	2	6	5				
21:00	2	1	4				
21:15	3	2	3				
21:30	0	2	3				
21:45	0	5	0				
22:00	1	0	0				
22:15	0	0	2				
22:30	0	1	0				
22:45	3	3	4				
23:00	1	0	2				
23:15	1	1	2				
23:30	0	0	1				
23:45	1	4	0				



Site notes:

Hartland Ave between West Saanich Rd and Hartland Landfill

Eastbound

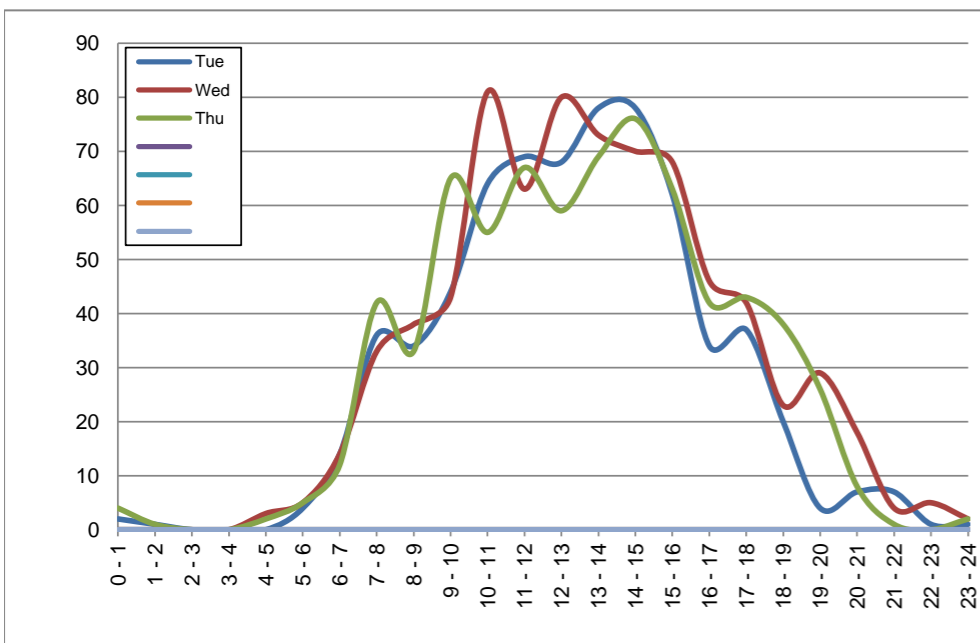
March 12, 2019 to March 14, 2019

Hourly Volumes

Time Period	Tue	Wed	Thu				
	Mar 12	Mar 13	Mar 14				
0 - 1	2	0	4				
1 - 2	1	0	1				
2 - 3	0	0	0				
3 - 4	0	0	0				
4 - 5	0	3	2				
5 - 6	4	5	5				
6 - 7	14	14	12				
7 - 8	36	33	42				
8 - 9	34	38	33				
9 - 10	44	43	65				
10 - 11	64	81	55				
11 - 12	69	63	67				
12 - 13	68	80	59				
13 - 14	78	73	69				
14 - 15	78	70	76				
15 - 16	62	68	63				
16 - 17	34	46	42				
17 - 18	37	42	43				
18 - 19	20	23	38				
19 - 20	4	29	26				
20 - 21	7	18	8				
21 - 22	7	4	1				
22 - 23	1	5	0				
23 - 24	1	2	2				
Day Total	665	740	713				

15-Minute Volumes

Time Start	Tue	Wed	Thu				
	Mar 12	Mar 13	Mar 14				
0:00	1	0	0				
0:15	1	0	3				
0:30	0	0	1				
0:45	0	0	0				
1:00	0	0	0				
1:15	0	0	1				
1:30	0	0	0				
1:45	1	0	0				
2:00	0	0	0				
2:15	0	0	0				
2:30	0	0	0				
2:45	0	0	0				
3:00	0	0	0				
3:15	0	0	0				
3:30	0	0	0				
3:45	0	0	0				
4:00	0	1	0				
4:15	0	0	0				
4:30	0	1	1				
4:45	0	1	1				
5:00	0	1	1				
5:15	1	0	0				
5:30	1	3	2				
5:45	2	1	2				
6:00	6	4	1				
6:15	3	1	3				
6:30	4	3	5				
6:45	1	6	3				
7:00	9	12	10				
7:15	9	7	15				
7:30	10	8	10				
7:45	8	6	7				
8:00	8	5	7				
8:15	10	11	12				
8:30	4	11	6				
8:45	12	11	8				
9:00	8	12	10				
9:15	10	8	18				
9:30	12	13	18				
9:45	14	10	19				
10:00	15	19	10				
10:15	14	20	11				
10:30	19	20	19				
10:45	16	22	15				
11:00	21	10	18				
11:15	15	16	18				
11:30	16	13	17				
11:45	17	24	14				
12:00	16	20	14				
12:15	20	18	17				
12:30	12	23	12				
12:45	20	19	16				
13:00	17	19	19				
13:15	21	13	16				
13:30	20	21	14				
13:45	20	20	20				
14:00	22	20	23				
14:15	19	12	11				
14:30	20	22	15				
14:45	17	16	27				
15:00	15	16	13				
15:15	16	18	19				
15:30	19	18	13				
15:45	12	16	18				
16:00	6	15	12				
16:15	7	6	12				
16:30	9	10	11				
16:45	12	15	7				
17:00	9	10	8				
17:15	18	14	22				
17:30	8	11	7				
17:45	2	7	6				
18:00	4	10	4				
18:15	5	3	14				
18:30	9	3	10				
18:45	2	7	10				
19:00	2	11	16				
19:15	0	6	6				
19:30	1	4	4				
19:45	1	8	0				
20:00	0	8	3				
20:15	2	4	2				
20:30	3	2	2				
20:45	2	4	1				
21:00	1	0	1				
21:15	1	1	0				
21:30	4	3	0				
21:45	1	0	0				
22:00	0	1	0				
22:15	0	1	0				
22:30	0	2	0				
22:45	1	1	0				
23:00	0	0	0				
23:15	0	1	0				
23:30	0	0	1				
23:45	1	1	1				



Site notes:

Vehicle Speed Summary

Saanich Engineering Department

Count Id: **M0021-01**

Filename: [Hartland Ave between West Saanich Rd and Hartland Landfill-Mar-2019.xlsm](#)

Location: Hartland Ave between West Saanich Rd and Hartland Landfill

Note: West Saanich Rd and Hartland Landfill

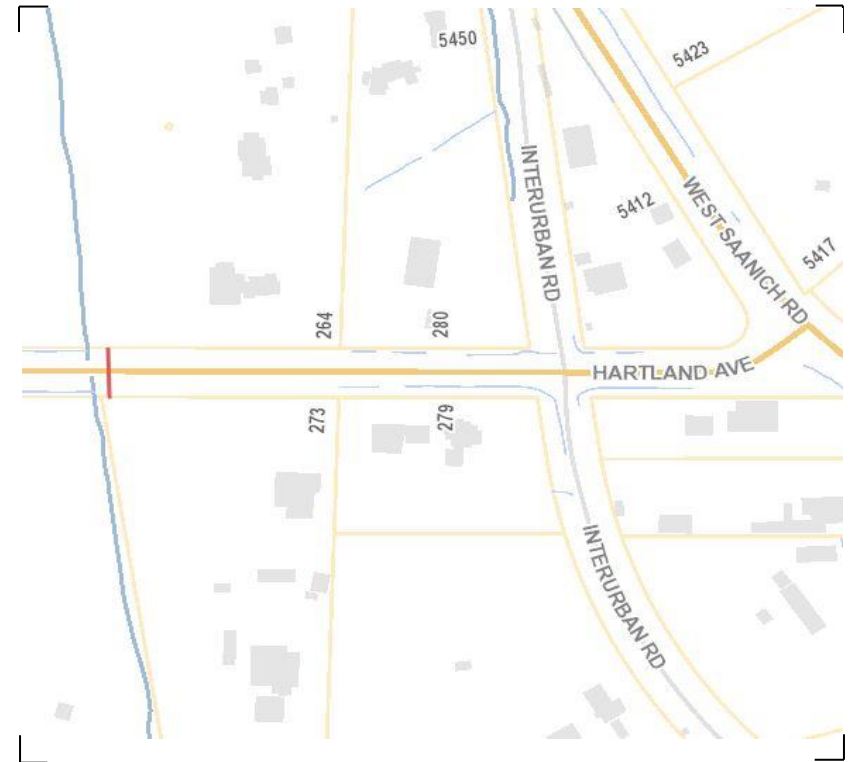
Direction: **East-West**

Dates: **March 10, 2019 To March 14, 2019**

Filtered data

AVG. SPEED	39 mph	63 km/h
50 % SPEED	39 mph	63 km/h
85 % SPEED	45 mph	72 km/h
95 % SPEED	49 mph	79 km/h

Location Map



Hartland Ave between West Saanich Rd and Hartland Landfill

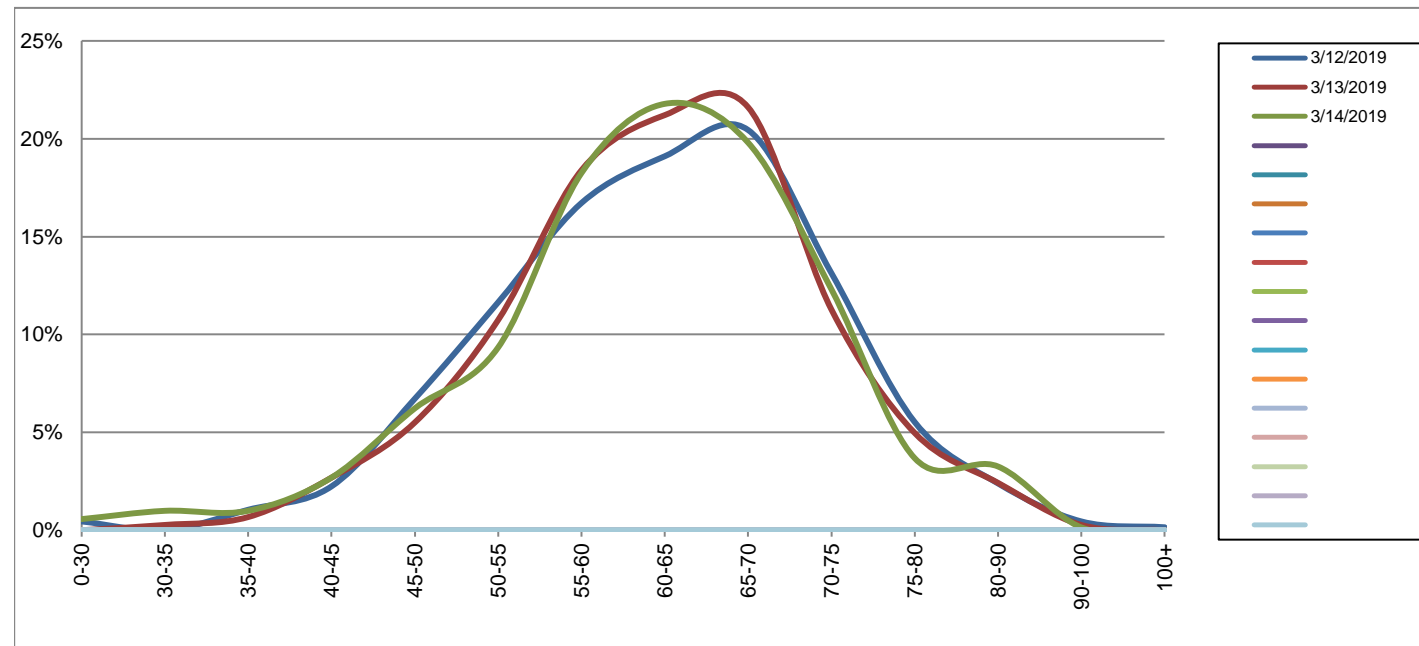
Westbound

March 12, 2019 to March 14, 2019

Daily Speed Bin Percentages														Daily Speed Bin Volumes														Total	Avg.	
Bin #	1	2	3	4	5	6	7	8	9	10	11	12	13	14	1	2	3	4	5	6	7	8	9	10	11	12	13	14	Volume	Speed
Bin Speeds	0-30	30-35	35-40	40-45	45-50	50-55	55-60	60-65	65-70	70-75	75-80	80-90	90-100	100+	0-30	30-35	35-40	40-45	45-50	50-55	55-60	60-65	65-70	70-75	75-80	80-90	90-100	100+		
3/12/2019	0.4%	0.0%	1.0%	2.2%	6.7%	11.6%	16.7%	19.1%	20.4%	13.1%	5.5%	2.4%	0.4%	0.1%	3	0	7	15	45	78	112	128	137	88	37	16	3	1	670	62
3/13/2019	0.0%	0.3%	0.7%	2.7%	5.5%	10.7%	18.4%	21.2%	21.6%	11.3%	5.0%	2.4%	0.3%	0.0%	0	2	5	20	41	80	137	158	161	84	37	18	2	0	745	62
3/14/2019	0.6%	1.0%	1.0%	2.7%	6.2%	9.3%	18.2%	21.8%	19.8%	12.3%	3.7%	3.3%	0.1%	0.0%	4	7	7	19	44	66	129	154	140	87	26	23	1	0	707	62
Total	0.3%	0.4%	0.9%	2.5%	6.1%	10.6%	17.8%	20.7%	20.6%	12.2%	4.7%	2.7%	0.3%	0.0%	7	9	19	54	130	224	378	440	438	259	100	57	6	1	2122	62

Speed Data Summary

Bin #	1	2	3	4	5	6	7	8	9	10	11	12	13	14	Total
Bin Speeds	0-30	30-35	35-40	40-45	45-50	50-55	55-60	60-65	65-70	70-75	75-80	80-90	90-100	100+	
Survey Total	7	9	19	54	130	224	378	440	438	259	100	57	6	1	2122
% Total	0.3%	0.4%	0.9%	2.5%	6.1%	10.6%	17.8%	20.7%	20.6%	12.2%	4.7%	2.7%	0.3%	0.0%	100%
Accumulated %	0.3%	0.8%	1.6%	4.2%	10.3%	20.9%	38.7%	59.4%	80.1%	92.3%	97.0%	99.7%	100.0%	100%	
Inverse Accum. %	99.7%	99.2%	98.4%	95.8%	89.7%	79.1%	61.3%	40.6%	19.9%	7.7%	3.0%	0.3%	0.0%	0.0%	
Average Speed	62 KM/H														



Site notes:

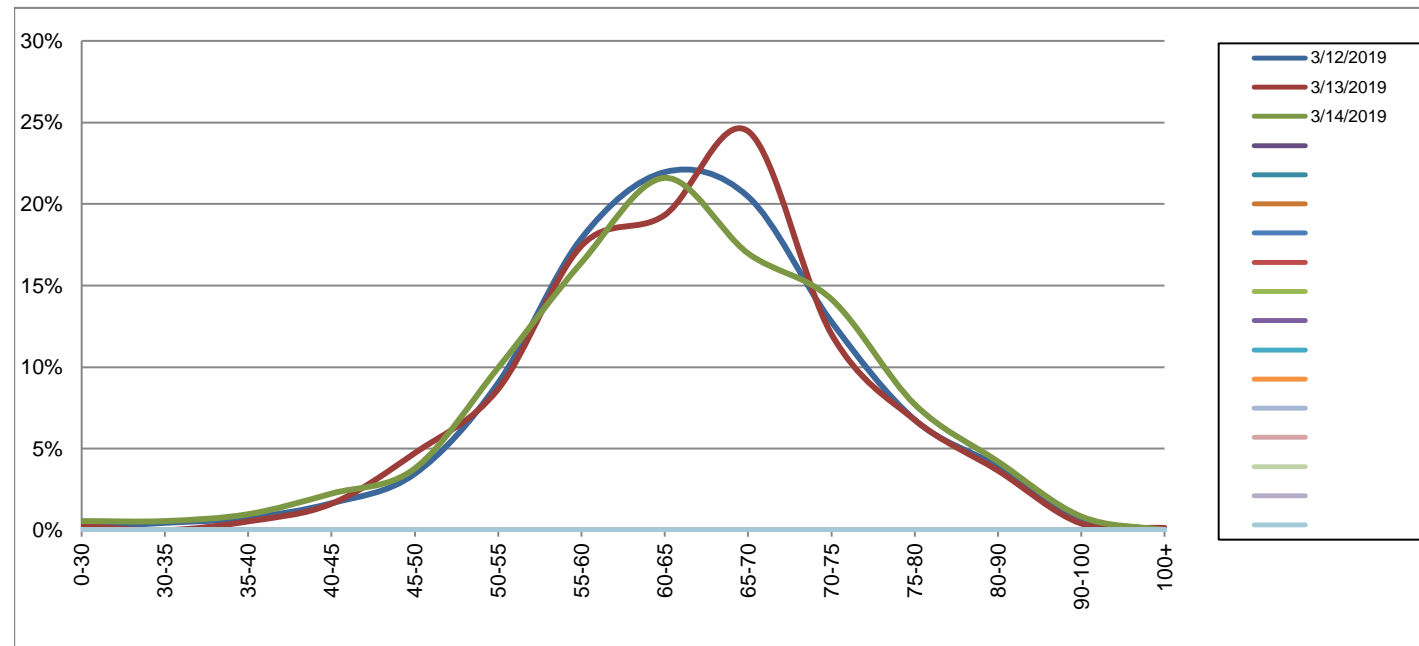
Hartland Ave between West Saanich Rd and Hartland Landfill

Eastbound
March 12, 2019 to March 14, 2019

Daily Speed Bin Percentages														Daily Speed Bin Volumes														Total	Avg.	
Bin #	1	2	3	4	5	6	7	8	9	10	11	12	13	14	1	2	3	4	5	6	7	8	9	10	11	12	13	14	Volume	Speed
Bin Speeds	0-30	30-35	35-40	40-45	45-50	50-55	55-60	60-65	65-70	70-75	75-80	80-90	90-100	100+	0-30	30-35	35-40	40-45	45-50	50-55	55-60	60-65	65-70	70-75	75-80	80-90	90-100	100+		
3/12/2019	0.2%	0.5%	0.8%	1.7%	3.5%	9.0%	17.9%	22.0%	20.5%	12.8%	6.8%	3.9%	0.8%	0.0%	1	3	5	11	23	60	119	146	136	85	45	26	5	0	665	64
3/13/2019	0.3%	0.0%	0.5%	1.6%	4.7%	8.6%	17.4%	19.3%	24.5%	12.0%	6.8%	3.6%	0.4%	0.1%	2	0	4	12	35	64	129	143	181	89	50	27	3	1	740	64
3/14/2019	0.6%	0.6%	1.0%	2.2%	3.8%	10.0%	16.4%	21.6%	17.0%	14.2%	7.7%	4.2%	0.8%	0.0%	4	4	7	16	27	71	117	154	121	101	55	30	6	0	713	64
Total	0.3%	0.3%	0.8%	1.8%	4.0%	9.2%	17.2%	20.9%	20.7%	13.0%	7.1%	3.9%	0.7%	0.0%	7	7	16	39	85	195	365	443	438	275	150	83	14	1	2118	64

Speed Data Summary

Bin #	1	2	3	4	5	6	7	8	9	10	11	12	13	14	Total
Bin Speeds	0-30	30-35	35-40	40-45	45-50	50-55	55-60	60-65	65-70	70-75	75-80	80-90	90-100	100+	
Survey Total	7	7	16	39	85	195	365	443	438	275	150	83	14	1	2118
% Total	0.3%	0.3%	0.8%	1.8%	4.0%	9.2%	17.2%	20.9%	20.7%	13.0%	7.1%	3.9%	0.7%	0.0%	100%
Accumulated %	0.3%	0.7%	1.4%	3.3%	7.3%	16.5%	33.7%	54.6%	75.3%	88.3%	95.4%	99.3%	100.0%	100%	
Inverse Accum. %	99.7%	99.3%	98.6%	96.7%	92.7%	83.5%	66.3%	45.4%	24.7%	11.7%	4.6%	0.7%	0.0%	0.0%	
Average Speed	64 KM/H														



Site notes:

Hartland Ave between West Saanich Rd and Hartland Landfill

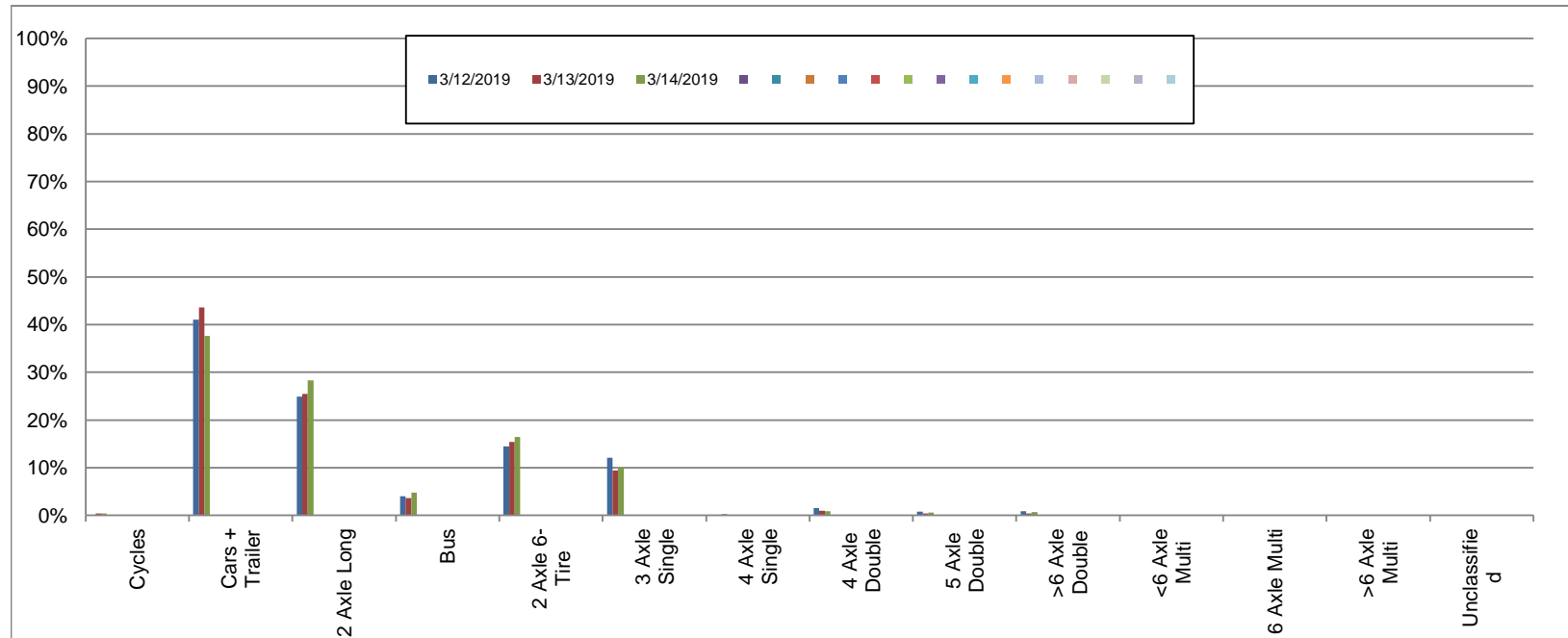
Westbound

March 12, 2019 to March 14, 2019

Daily Class Bin Percentages															Daily Class Bin Volumes											Total Volume			
Bin #	1	2	3	4	5	6	7	8	9	10	11	12	13	14	1	2	3	4	5	6	7	8	9	10	11		12	13	14
Bin Class	Cycles	Cars + Trailer	2 Axle Long	Bus	2 Axle 6-Tire	3 Axle Single	4 Axle Single	4 Axle Double	5 Axle Double	>6 Axle Double	<6 Axle Multi	6 Axle Multi	>6 Axle Multi	Unclassified	Cycles	Cars + Trailer	2 Axle Long	Bus	2 Axle 6-Tire	3 Axle Single	4 Axle Single	4 Axle Double	5 Axle Double	>6 Axle Double	<6 Axle Multi	6 Axle Multi	>6 Axle Multi	Unclassified	
3/12/2019	0.1%	41.0%	24.9%	4.0%	14.5%	12.1%	0.1%	1.5%	0.7%	0.9%	0.0%	0.0%	0.0%	0.0%	1	275	167	27	97	81	1	10	5	6	0	0	0	0	670
3/13/2019	0.4%	43.6%	25.5%	3.6%	15.4%	9.4%	0.0%	0.9%	0.4%	0.4%	0.0%	0.0%	0.1%	0.1%	3	325	190	27	115	70	0	7	3	3	0	0	1	1	745
3/14/2019	0.4%	37.6%	28.3%	4.8%	16.4%	10.0%	0.3%	0.8%	0.6%	0.7%	0.0%	0.0%	0.0%	0.0%	3	266	200	34	116	71	2	6	4	5	0	0	0	0	707
Total	0.3%	40.8%	26.2%	4.1%	15.5%	10.5%	0.1%	1.1%	0.6%	0.7%	0.0%	0.0%	0.0%	0.0%	7	866	557	88	328	222	3	23	12	14	0	0	1	1	2122

Class Data Summary

Bin #	1	2	3	4	5	6	7	8	9	10	11	12	13	14	Total Volume
Bin Class	Cycles	Cars + Trailer	2 Axle Long	Bus	2 Axle 6-Tire	3 Axle Single	4 Axle Single	4 Axle Double	5 Axle Double	>6 Axle Double	<6 Axle Multi	6 Axle Multi	>6 Axle Multi	Unclassified	Total Volume
Survey Total	7	866	557	88	328	222	3	23	12	14	0	0	1	1	2122
% Total	0.3%	40.8%	26.2%	4.1%	15.5%	10.5%	0.1%	1.1%	0.6%	0.7%	0.0%	0.0%	0.0%	0.0%	100%
Accumulated %	0.3%	41.1%	67.4%	71.5%	87.0%	97.5%	97.6%	98.7%	99.2%	99.9%	99.9%	99.9%	100.0%	100.0%	
Inv. Accum. %	99.7%	58.9%	32.6%	28.5%	13.0%	2.5%	2.4%	1.3%	0.8%	0.1%	0.1%	0.1%	0.0%	0.0%	



Classification Descriptions

Bin #	Bin Description
1	Motorcycles
2	Passenger cars, including those with recreational trailers
3	2-axle pick-ups, vans, and RVs, including those with recreational trailers
4	Buses
5	2-axle, 6-tire single units
6	3-axle single units
7	4-axle single units
8	3-axle or 4-axle double unit
9	5-axle double unit
10	6-, 7-, or 8-axle double unit
11	5-axle multiple unit
12	6-axle multiple unit
13	7-or-more-axle multiple unit
14	Vehicles that could not be classified

Site notes:

Hartland Ave between West Saanich Rd and Hartland Landfill

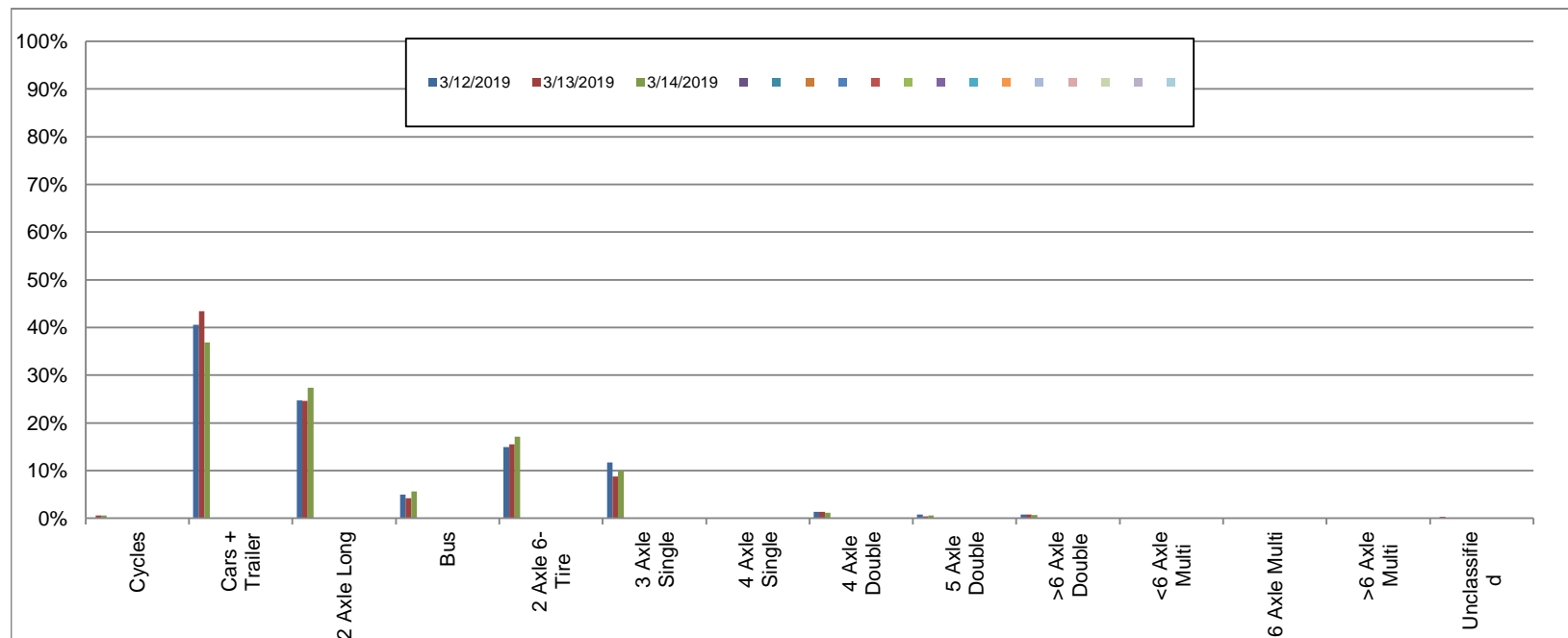
Eastbound

March 12, 2019 to March 14, 2019

Daily Class Bin Percentages															Daily Class Bin Volumes														
Bin #	1	2	3	4	5	6	7	8	9	10	11	12	13	14	1	2	3	4	5	6	7	8	9	10	11	12	13	14	Total Volume
Bin Class	Cycles	Cars + Trailer	2 Axle Long	Bus	2 Axle 6-Tire	3 Axle Single	4 Axle Single	4 Axle Double	5 Axle Double	>6 Axle Double	<6 Axle Multi	6 Axle Multi	>6 Axle Multi	Unclassified	Cycles	Cars + Trailer	2 Axle Long	Bus	2 Axle 6-Tire	3 Axle Single	4 Axle Single	4 Axle Double	5 Axle Double	>6 Axle Double	<6 Axle Multi	6 Axle Multi	>6 Axle Multi	Unclassified	
3/12/2019	0.2%	40.6%	24.7%	5.0%	14.9%	11.7%	0.2%	1.4%	0.8%	0.8%	0.0%	0.0%	0.0%	0.0%	1	270	164	33	99	78	1	9	5	5	0	0	0	0	665
3/13/2019	0.5%	43.4%	24.6%	4.2%	15.5%	8.8%	0.0%	1.4%	0.4%	0.8%	0.0%	0.0%	0.1%	0.3%	4	321	182	31	115	65	0	10	3	6	0	0	1	2	740
3/14/2019	0.6%	36.9%	27.3%	5.6%	17.1%	10.0%	0.1%	1.1%	0.6%	0.7%	0.0%	0.0%	0.0%	0.0%	4	263	195	40	122	71	1	8	4	5	0	0	0	0	713
Total	0.4%	40.3%	25.5%	4.9%	15.9%	10.1%	0.1%	1.3%	0.6%	0.8%	0.0%	0.0%	0.0%	0.1%	9	854	541	104	336	214	2	27	12	16	0	0	1	2	2118

Class Data Summary

Bin #	1	2	3	4	5	6	7	8	9	10	11	12	13	14	Total Volume
Bin Class	Cycles	Cars + Trailer	2 Axle Long	Bus	2 Axle 6-Tire	3 Axle Single	4 Axle Single	4 Axle Double	5 Axle Double	>6 Axle Double	<6 Axle Multi	6 Axle Multi	>6 Axle Multi	Unclassified	Total Volume
Survey Total	9	854	541	104	336	214	2	27	12	16	0	0	1	2	2118
% Total	0.4%	40.3%	25.5%	4.9%	15.9%	10.1%	0.1%	1.3%	0.6%	0.8%	0.0%	0.0%	0.0%	0.1%	100%
Accumulated %	0.4%	40.7%	66.3%	71.2%	87.1%	97.2%	97.3%	98.5%	99.1%	99.9%	99.9%	99.9%	99.9%	100.0%	
Inv. Accum. %	99.6%	59.3%	33.7%	28.8%	12.9%	2.8%	2.7%	1.5%	0.9%	0.1%	0.1%	0.1%	0.1%	0.0%	



Classification Descriptions

Bin #	Bin Description
1	Motorcycles
2	Passenger cars, including those with recreational trailers
3	2-axle pick-ups, vans, and RVs, including those with recreational trailers
4	Buses
5	2-axle, 6-tire single units
6	3-axle single units
7	4-axle single units
8	3-axle or 4-axle double unit
9	5-axle double unit
10	6-, 7-, or 8-axle double unit
11	5-axle multiple unit
12	6-axle multiple unit
13	7-or-more-axle multiple unit
14	Vehicles that could not be classified

Site notes: